

Mobile Crane



ST15T

Hydraulic Mobile Crane

Capacity : 15 Tonnes Capacity

Rough terrain and rugged articulated pick n move crane.



Specifications

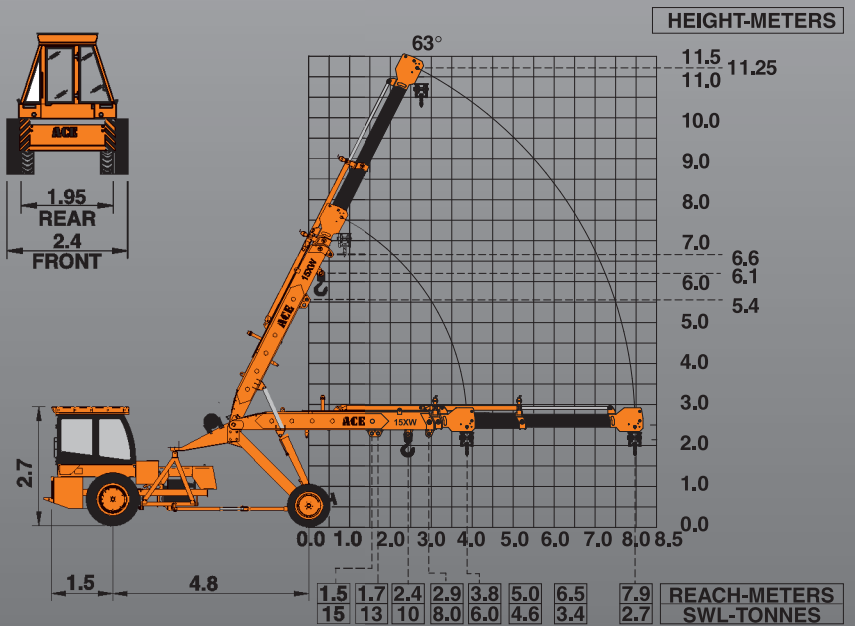
ST15T

LIFTING CAPACITY (Free on wheels)	15 Tonnes
ENGINE	Simpson's S433(I) F1 (CEV BS-III), 4 cylinder, water cooled diesel engine or suitable equivalent engine
Rated Power	48 BHP (36KW) at 2200 RPM
TRANSMISSION	Heavy duty, sliding mesh with 6 forward and 2 reverse speeds with high low range selector.
Clutch	Heavy duty, single, dry friction, cerametallic clutch plate with diaphragm type pressure plate.
Top Speed	28 KMPH without load.
HYDRAULIC SYSTEM	<ul style="list-style-type: none"> ● Gear/Intra vane type main pump. ● Four spools control valve (heavy duty) ● Suction line has 100 mesh size strainer while return line is fitted with 25 micron full flow filter.

	<ul style="list-style-type: none"> ● Two double acting lift cylinders, two double acting steering cylinders and one double acting extension cylinder.
POWER STEERING	Articulation through 2 hydraulic cylinders 55° articulation on either side and turning radius of 6.5 Mtrs. (approx) on outer rear wheels.
BRAKES	Pneumatically assisted hydraulic brakes. Front and rear brakes are actuated through a single pedal. Parking brake is Provided.
TELESCOPIC BOOM	Three part boom with hydraulically operated extensions (11.25 mtrs. height)
Telescoping Time	14 Seconds.
BOOM LUFFING	
Time	20 ± 3 Seconds.
HOIST	Winch is driven by hydraulic motor and fitted with hook block employing 4 falls of 13 mm dia rope.



(11.25 Mtrs. height)



ALL DIMENSIONS ARE IN METRES ±5%